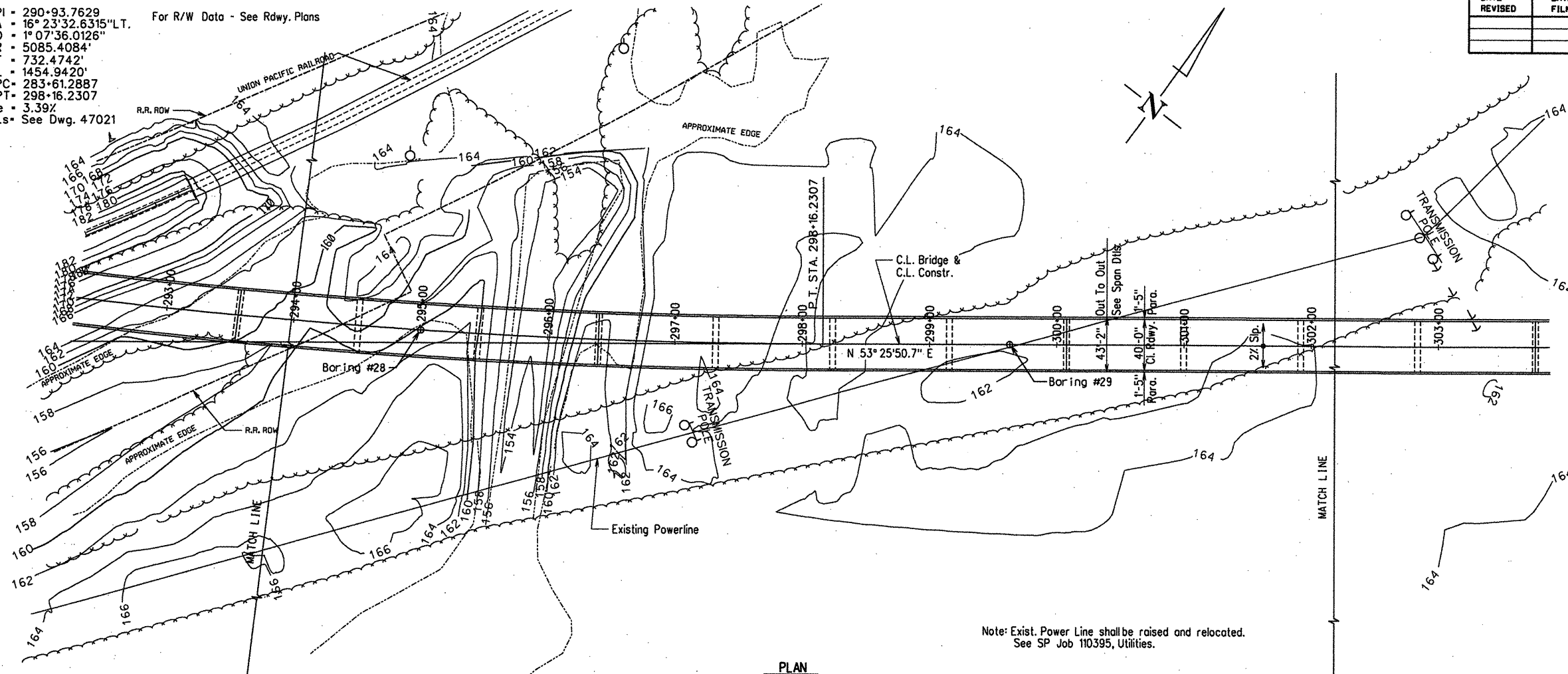


PI = 290+93.7629
 A = 16° 23' 32.6315" LT.
 D = 1° 07' 36.0126"
 R = 5085.4084'
 T = 732.4742'
 L = 1454.9420'
 PC = 283+61.2887
 PT = 298+16.2307
 e = 3.39%
 Ls = See Dwg. 47021

For R/W Data - See Rdwy. Plans

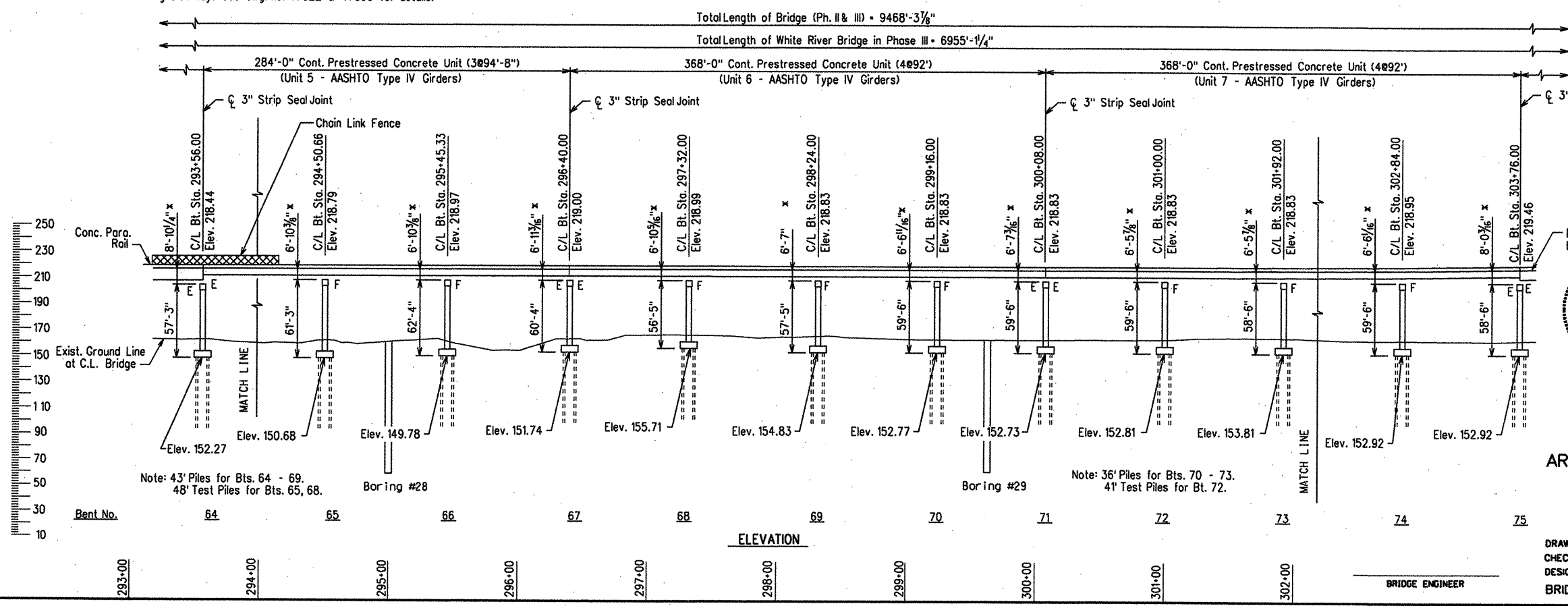
DATE REVISED	DATE FILMED	DATE REVISED	DATE FILMED	FED. ROAD DIST. NO.	STATE	FED. AID PROJ. NO.	SHEET NO.	TOTAL SHEETS
				6	ARK.			
				JOB NO.		110395	202a3	
				06830	LAYOUT		47018	



Note: Exist. Power Line shall be raised and relocated.
 See SP Job 110395, Utilities.

PLAN

Note: Chain link fence on parapet required over railroad right of way. See dwg. no. 47022 & 47093 for details.



Strip Seal Joints are designated as "X" Strip Seal Joints where "X" represents the "A" dimension at 60 degrees F as shown in the table on dwg. no. 47095 - 47099.

* Top of Deck at C.L. Bridge and C.L. Bent to Low End of Cap

Note: See dwgs. no. 47024 - 47028 for Soil Borings & additional data.
 See dwg. no. 47023 for General Notes.
 See dwg. no. 47020 for Hydraulic Data Table.

STATE OF ARKANSAS
REGISTERED PROFESSIONAL ENGINEER
H. JAMES ENGSTROM & ASSOC., INC.
NO. 3125
ALTERNATE NO. 1
8/31/10

LAYOUT OF BRIDGE OVER WHITE RIVER
(SHEET 7 OF 9)
WHITE RIVER STR. & APPRS.
(CLARENDON) (PH. III) (F)
MONROE COUNTY
ROUTE 79 SEC. 13
ARKANSAS STATE HIGHWAY COMMISSION
LITTLE ROCK, ARK.

Engstrom / Modjeski and Masters

DRAWN BY: LKD/TAD DATE: Sep. 10 FILENAME: b1103951_107.dgn
 CHECKED BY: FS DATE: Sep. 10 SCALE: 1" = 50'-0"
 DESIGNED BY: YO DATE: Sep. 10
 BRIDGE NO. 06830 DRAWING NO. 47018